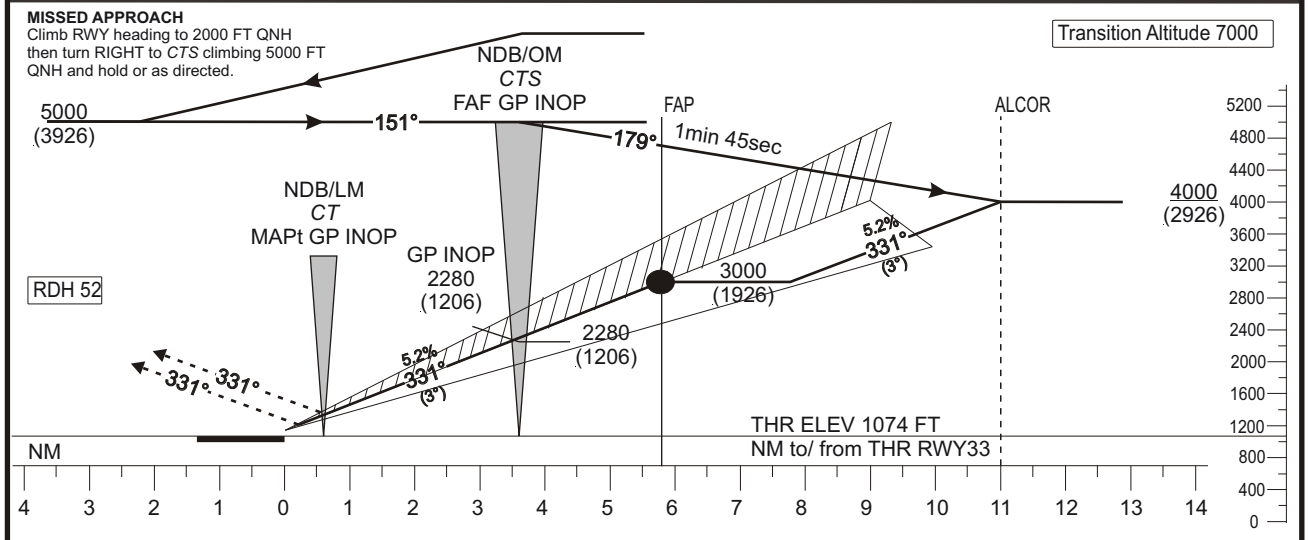
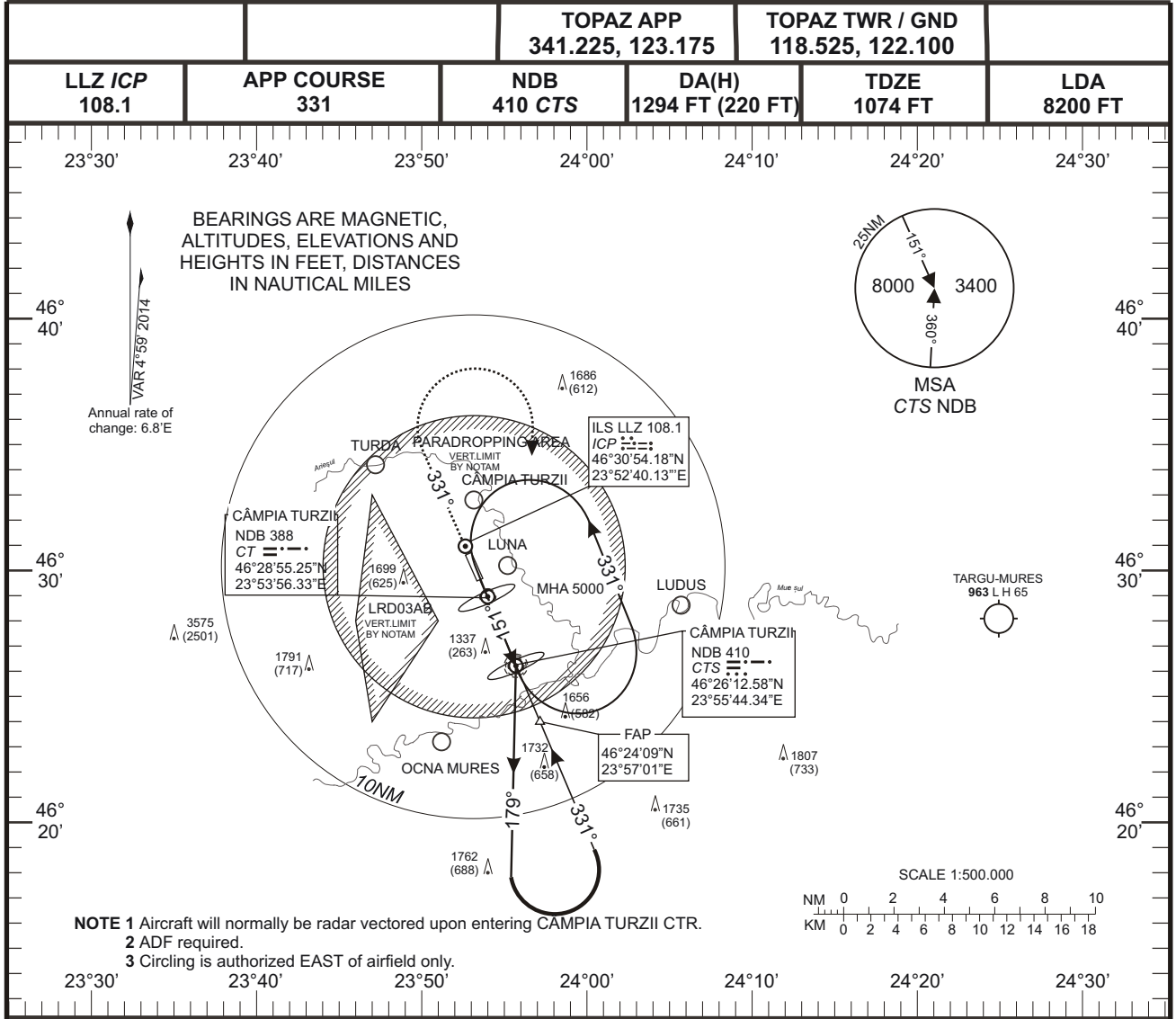


CÂMPIA TURZII (LRCT)
AERODROME ELEV 1078 FT
ILS RWY 33
CAT E



Ground speed	kts	100	130	160	180	200	220
FAP - MAPt 5.2NM	min:s	5:06	3:55	3:10	2:50	2:30	2:20
Rate of descent	ft/min	531	690	849	955	1061	1167

CAT E	ILS		ILS GP INOP		VM(C)	
	DA(H)	VIS	MDA(H)	VIS	MDA(H)	VIS
	1294 (220)	1000	1590 (510)	3200	2140 (1060)	4800

COORDINATES		
CTS NDB (IAF)	462612.58N	0235544.34E
FAP	462409N	0235701E
MAPt GP INOP - MM	462855.25N	0235356.33E
THR RWY 33	462931.73N	0235333.24E
GP ANGLE -3°		